

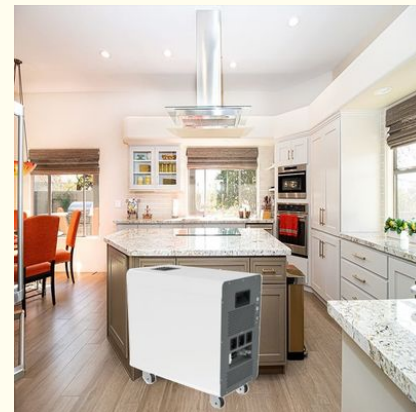


All In One Energy Storage System Specification 51.2V100Ah/200Ah LiFePO4 Gt 6000 Cycles

Our Product Introduction

Basic Information

- Place of Origin: China
- Brand Name: XWELL
- Certification: UN38.3, MSDS, UL, CB, BIS, PSE, GB4943.1 safety standard, CE, FCC, ROHS, battery UN38.3, MSDS, UL, CB, BIS, PSE
- Model Number: XW-3200W
- Minimum Order Quantity: 1 pcs
- Packaging Details: Carton
- Delivery Time: 7-10 working days
- Payment Terms: L/C, D/A, D/P, T/T, Western Union, MoneyGram
- Supply Ability: 5000 pcs per month



Product Specification

- Voltage: 48V
- Nominal Capacity: 100Ah 、 200Ah
- Nominal Energy: 5.0 Kwh、 10.0kwh
- Cell Type: LiFePO4 Battery
- Life Time: 6000 Cycles
- Max Charge Current: 50A
- Max Discharge Current: 100A
- Inverter Rated Power: 3.2kw
- Peak Power: 5kw
- Highlight: **All In One Energy Storage System,
LiFePO4 Energy Storage System**

Product Description

All In One Energy Storage System Specification 51.2V100Ah/200Ah LiFePO4 Gt 6000 Cycles

Product description

The All In One Energy Storage System is a high-performance, integrated solution designed for efficient energy storage and management. It utilizes advanced lithium iron phosphate (LiFePO4) battery technology, offering a capacity of either 51.2V 100Ah or 51.2V 200Ah, depending on the specific model chosen.

The LiFePO4 battery chemistry is known for its exceptional cycle life and safety features, making it a reliable and long-lasting energy storage solution. With a lifespan of up to 6000 cycles, this system provides consistent and stable performance over an extended period of use.

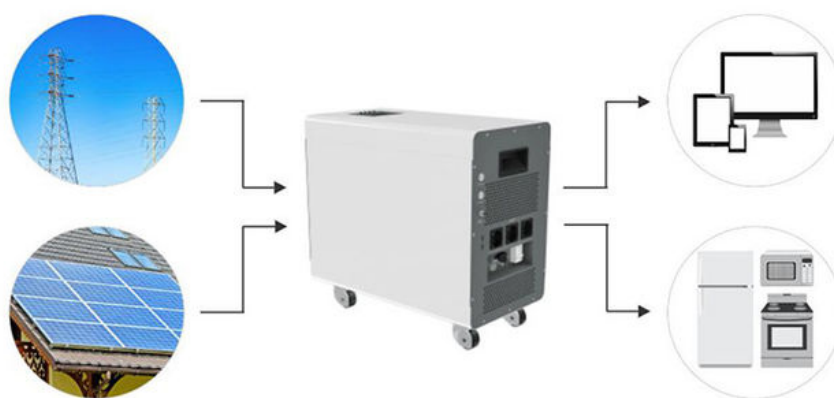
All In One Energy Storage System Advantages

1. Integrated LED indicator, display the SOC and operating status
2. Balance between cells, balance between racks
3. LCD display the battery system information(customized)
4. Easily for installation and capacity expansion
5. 10 years design life, Stable performance, maintenance-free

All in One Energy Storage System Specification

Battery Parameters		
Model	51.2V100Ah	51.2V200Ah
Nominal voltage	51.2V	
Nominal capacity (kwh)	5KWh	10KWh
Cell type	LiFePO4	
Cycle life	>6000 Cycles(80%DOD)	
Charge temperature range	0~65°C	
Discharge temperature range	-20~65°C	
Maximum continuous charge current	50A	
Maximum continuous discharge current	100A	
Color	Black /White	
Dimension (mm)	710x300x600	710x300x800
Weight	81Kg	110Kg
Installation method	Floor type with wheels	
Inverter Parameters		
Rated power	3.2KW	
Peak power	5KW	
Output wave form	Pure sine wave	
Input/Output AC voltage	AC 110V/220V	
Input/Output AC voltage frequency	50Hz/60Hz	

All in One Energy Storage System Connection Diagram



Our service

1. OEM&ODM Service
2. Custom print logo
3. Free battery solution
4. Free Shipping cost to China address
5. Support sample order for test

Company Information

Xwell is a leading lithium battery manufacturer in China, which is committed to provide customers with safe and durable battery products for EV power battery, portable energy storage, household energy storage, micro power grid, telecom station power supply, UPS, solar street lights, harvesters, AGV, forklift, electric tricycles, electric wheelchairs, etc. Elite professional experienced technicians and advanced equipments provide customers with high-quality batteries and professional customized battery solutions. Elite has passed ISO 9001 ISO 14001 certification, Elite products have been certified with CE, UN38.3, MSDS, etc.



XWELL GUANGDONG XWELL TECHNOLOGY CO., LTD.

+86 18620492985

sales@esslithiumbattery.com

esslithiumbattery.com

Room 322, Building 3, No. 801, Qiaoxing Avenue, Xiaoluo Village, Shatou Street, Panyu District, Guangzhou, China